

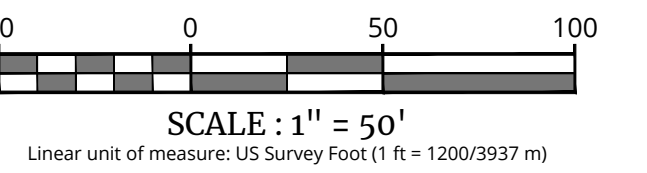
PROPOSED WAREHOUSE
243,600 SF
173 EMPLOYEE PARKING STALLS
44 TRAILER STORAGE STALLS
57 LOADING DOCKS
FFE = 487.75
DOCKS = 483.75

PROPOSED SITE IMPROVEMENTS UNDER SEPARATE APPLICATION (SIPON)

SIGN LEGEND:

- STOP
- ACCESSIBLE PARKING
- NO PARKING
- STORMWATER SIGNAGE

EXISTING	LEGEND	PROPOSED
	TRAVERSE LINE, CENTER LINE OR BASELINE (LABEL AS SUCH)	
	RIGHT OF WAY LINE	
	PROPERTY LINE	
	EDGE OF PAVEMENT	
	CURB	
	DEPRESSED CURB	
	SIDEWALK	
	FENCES	
	TRELLINE	
	ROADWAY SIGNS	
	WETLAND LINE	
	MUNICIPAL BOUNDARY LINE	
	STALL COUNT	
	ADA ACCESSIBLE STALL	
	DEPRESSED CURB AND ADA RAMP	
	DIRECTION OF TRAFFIC FLOW	



BULK TABLE
ZONING DISTRICT: MC-1 (MIXED COMMERCIAL)
SPECIAL USE SUBJECT TO SITE PLAN APPROVAL; WAREHOUSE

TABLE OF BULK REQUIREMENTS			
MINIMUM	REQUIRED	PROPOSED LOT	REMARKS
LOT AREA	2 ACRES	±20.17 ACRES	OK
FRONT YARD SETBACK	50 FEET	±51.0 FEET	OK
REAR YARD SETBACK	30 FEET	±105.45 FEET	OK
SIDE YARD SETBACK			
ONE	15 FEET	±37.50 FEET	OK
BOTH	35 FEET	±223.38 FEET (±185.88', ±37.5')	OK
LOT WIDTH	100 FEET	±1,092 FEET	OK
MAXIMUM			
BUILDING HEIGHT	65 FEET	<65 FEET	OK
LOT COVERAGE	70%	52.8% (243,600/461,250)	OK
BUILDING COVERAGE	50%	37.7% (243,600/646,154)	OK

PARKING REQUIRMENTS

PROPOSED WAREHOUSE
OFFICE USE:
1 PER 300 SF OF FLOOR AREA
14,700 SF = 49 SPACES REQUIRED
WAREHOUSE USE:
1 PER 1,000 SF OF FLOOR AREA (ESTIMATED NEED PER APPLICANT)
243,600 SF = 243 SPACES REQUIRED
TOTAL PARKING REQUIRED = 98 SPACES
TOTAL PARKING PROVIDED = 173 SPACES
NOTE:
1. THE PARKING GENERATION MANUAL - WAREHOUSING USE - AVERAGE RATE OF 0.39 SPACES PER 1,000 SF.
GROSS FLOOR AREA = 243,600 GROSS SQ. FT. / 1,000 X 0.39 = 96 SPACES
ISLAND SPACE REQUIREMENT CALCULATION
10 SQ. FT. PER PARKING SPACE
REQUIRED = 230 X 10 = 2,300 SQ. FT.
PROVIDED = 2,500 SQ. FT.

TOWN OF WAWAYANDA
PLANNING BOARD

PRELIMINARY SITE PLAN
FOR
DEWPOINT SOUTH

SBL: 4-1-50.32, 6-1-90.22,
90.24 & 107

TOWN OF WAWAYANDA
ORANGE COUNTY
NEW YORK STATE

NEWBURGH
555 Hudson Valley Avenue
Suite 101
New Windsor, NY 12553
Phone: 845.564.4495
COLLIERS ENGINEERING & DESIGN
ARCHITECTURAL, INTERIOR AND ENVIRONMENTAL
SURVEYING, C.T.P.C.

SCALE: AS SHOWN
DATE: 04/08/2024
PROJECT NUMBER: 20006912E
DRAWING NAME: C-LAY1
DRAWN BY: MAS
CHECKED BY: CDR

SHEET TITLE:
OVERALL DIMENSION PLAN

SHEET NUMBER:
C-300

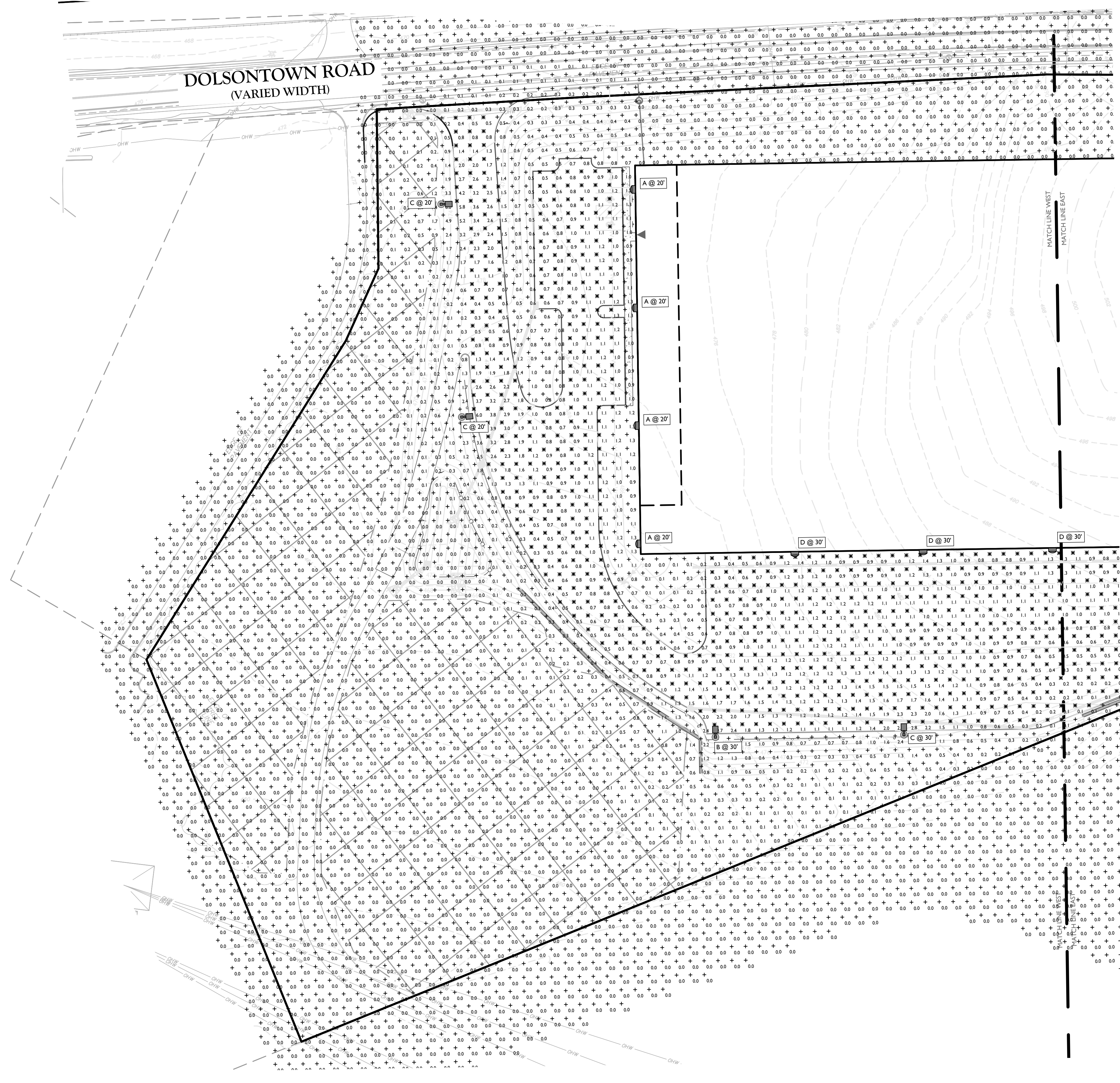
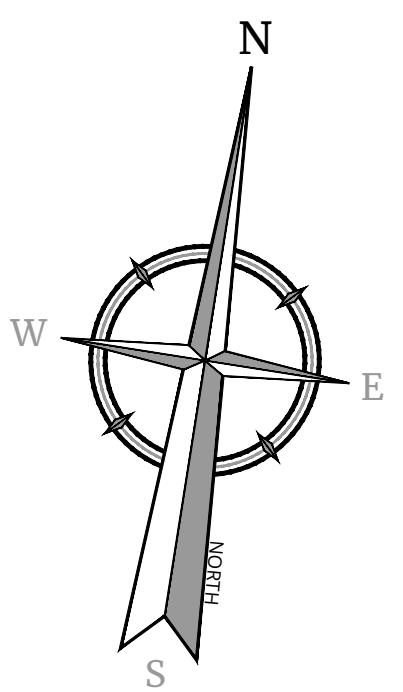
UNAUTHORIZED ALTERATION OR ADDITION TO A SURVEY OR ENGINEERING MAP BEARING A LICENSED LAND SURVEYOR OR PROFESSIONAL ENGINEER IS A VIOLATION OF SECTION 7209, SUB-DIVISION 2, OF THE NEW YORK STATE EDUCATION LAW. ONLY MAPS WITH THE LAND SURVEYOR OR PROFESSIONAL ENGINEER'S SEAL ARE GENUINE TRUE AND CORRECT COPIES OF THE LAND SURVEYOR OR PROFESSIONAL ENGINEER'S ORIGINAL WORK AND OPINION.

NOTE: DO NOT SCALE DRAWINGS FOR CONSTRUCTION.



PROTECT YOURSELF
ALL STATES REQUIRE NOTIFICATION OF
UTILITY LOCATIONS BEFORE ANY TRENCH
PREPARING TO DISTURB THE EARTH'S
SURFACE. ANSWER IN ANY STATE

FOR STATE SPECIFIC DIRECT PHONE NUMBERS
VISIT: WWW.CALL811.COM



LIGHTING NOTES:

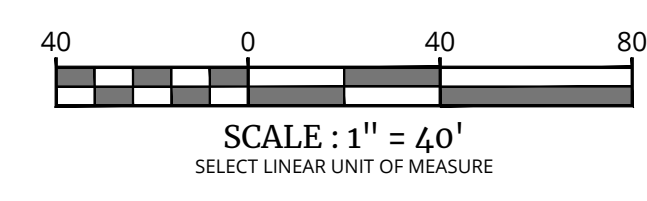
- THIS PLAN IS TO BE USED FOR LIGHTING PURPOSES ONLY.
- POLES AND FIXTURES AS SUPPLIED BY:
POLES & WALL FIXTURES - HOLOPHANE
POLE FIXTURES - AMERICAN ELECTRIC LIGHTING
- LAMPS ARE TO BE LED. A LIGHT LOSS FACTOR (LLF) WAS USED AS SHOWN IN THE LUMINAIRES SCHEDULE.
- FIXTURES AND POLES ARE TO BE BLACK.
- POLE MOUNTED FIXTURES SHALL BE PLACED A MINIMUM OF TWO (2) FEET BEHIND CURBS, EDGE OF PAVEMENT OR RETAINING WALLS IN CAR PARKING AREAS.
- PROPOSED LIGHT FIXTURE LOCATIONS ARE CRITICAL TO PROVIDE THE LIGHTING LEVELS DEPICTED ON THIS PLAN. THE LIGHTING CONTRACTOR SHALL FIELD VERIFY FIXTURE LOCATIONS PRIOR TO INSTALLATION. IF ADJUSTMENT TO ANY LIGHT FIXTURE LOCATION IS REQUIRED DUE TO FINAL CONSTRUCTION OF UTILITIES AND SITE IMPROVEMENTS, THE LIGHTING CONTRACTOR SHALL NOTIFY THE PROJECT LANDSCAPE ARCHITECT OF ANY DISCREPANCIES PRIOR TO INSTALLATION.
- LIGHTING SHOWN ON PLAN DEPICTS AVERAGE MAINTAINED FOOTCANDLE LEVELS AT GRADE.
- CONTRACTOR TO PROVIDE SHOP DRAWINGS OF LIGHT FIXTURES FOR REVIEW AND APPROVAL BY THE OWNER OR PROJECT LANDSCAPE ARCHITECT.
- ELECTRICAL PLANS FOR WIRING LAYOUT BY OTHERS.
- POLE BASE INSTALLATION SHALL INCLUDE A SUPPLEMENTARY GROUND ROD AND WIRE LEAD TO BASE FOR POWER CONNECTION. DETAILS PER PROJECT ELECTRICAL ENGINEER.
- ALL LIGHTING FIXTURES WILL BE DARK SKY COMPLIANT.

CALCULATION SUMMARY						
DESCRIPTION	CALC. TYPE	UNITS	AVG.	MAX.	MIN.	AVG. / MIN.
WESTERN DRIVEWAY	ILLUMINANCE	FC	1.3	6.0	0.3	4.3:1
LOADING DOCK & TRAILER STORAGE AREA	ILLUMINANCE	FC	1.0	5.4	0.1	10.0:1
WESTERN PARKING AREA	ILLUMINANCE	FC	1.0	1.3	0.5	2.0:1
EASTERN PARKING AREA	ILLUMINANCE	FC	1.5	5.9	0.3	5.0:1

LUMINAIRE SCHEDULE							
KEY	QTY.	DESCRIPTION	ARRANGEMENT	MTG. HT.	LUMENS/LAMP	LLF	CATALOG #
A	7	HOLOPHANE WALL PACK FULL CUTOFF LED	SINGLE WALL PACK	20/30'	5,144	0.97	HLWPC2-P20-30K-MVOLT*-FTFM-BKSDP-P3
B	7	AMERICAN ELECTRIC LIGHTING - ATB0 SERIES LED	SINGLE	30'	20,049	0.97	ATB0-P305-MVOLT*-R4-3K-BK-UMS-XX
B2	2	AMERICAN ELECTRIC LIGHTING - ATB0 SERIES LED	DOUBLE @ 90°	30'	20,049	0.97	ATB0-P305-MVOLT*-R4-3K-BK-UMS-XX
C	4	AMERICAN ELECTRIC LIGHTING - ATB0 SERIES LED	SINGLE	20/30'	16,557	0.97	ATB0-P305-MVOLT*-R4-3K-BK-HSS-UMS-XX
D	8	HOLOPHANE WALL PACK FULL CUTOFF LED	SINGLE WALL PACK	30'	9,561	0.97	HLWPC2-P40-30K-MVOLT*-FTFM-BKSDP-P3

LIGHTING LEGEND:

- SINGLE FIXTURE POLE LIGHT
- WALLPACK
- LIGHT LEVEL AT GRADE (IN FOOT CANDLES)



TOWN OF WAWAYANDA
PLANNING BOARD

PRELIMINARY SITE PLAN

FOR
DEWPOINT SOUTH

SBL: 4-1-50.32, 6-1-90.22,
90.24 & 107

TOWN OF WAWAYANDA
ORANGE COUNTY
NEW YORK STATE

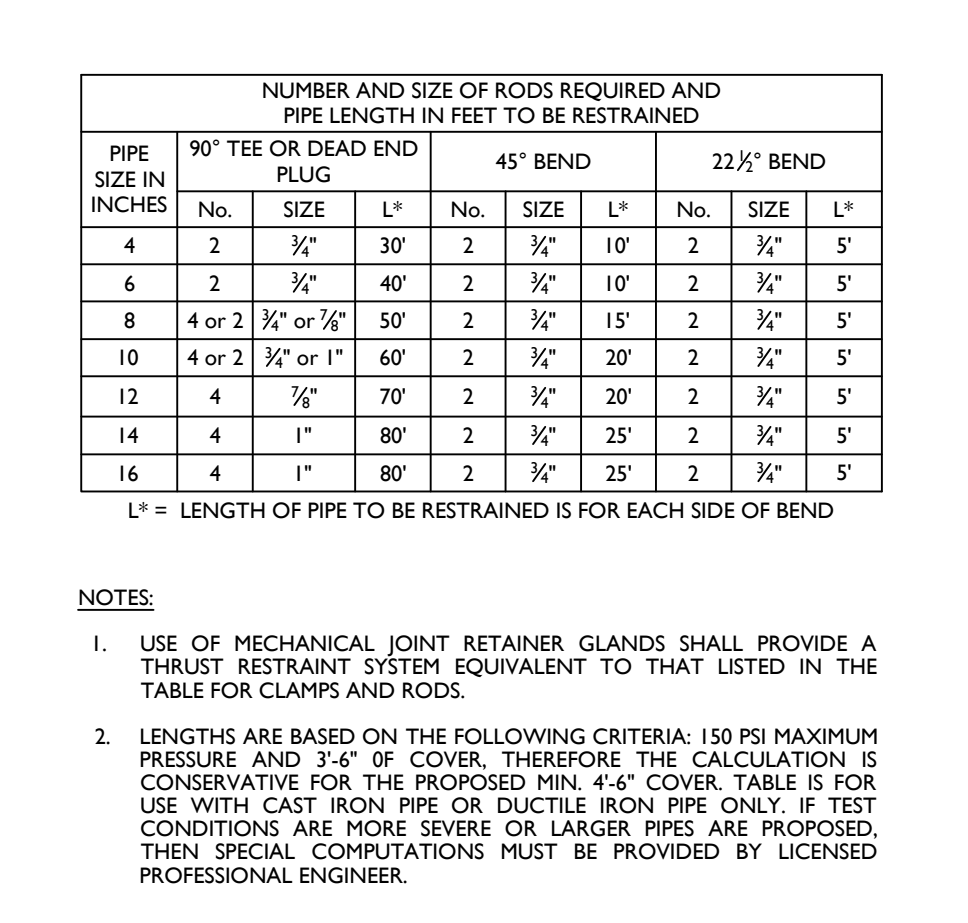
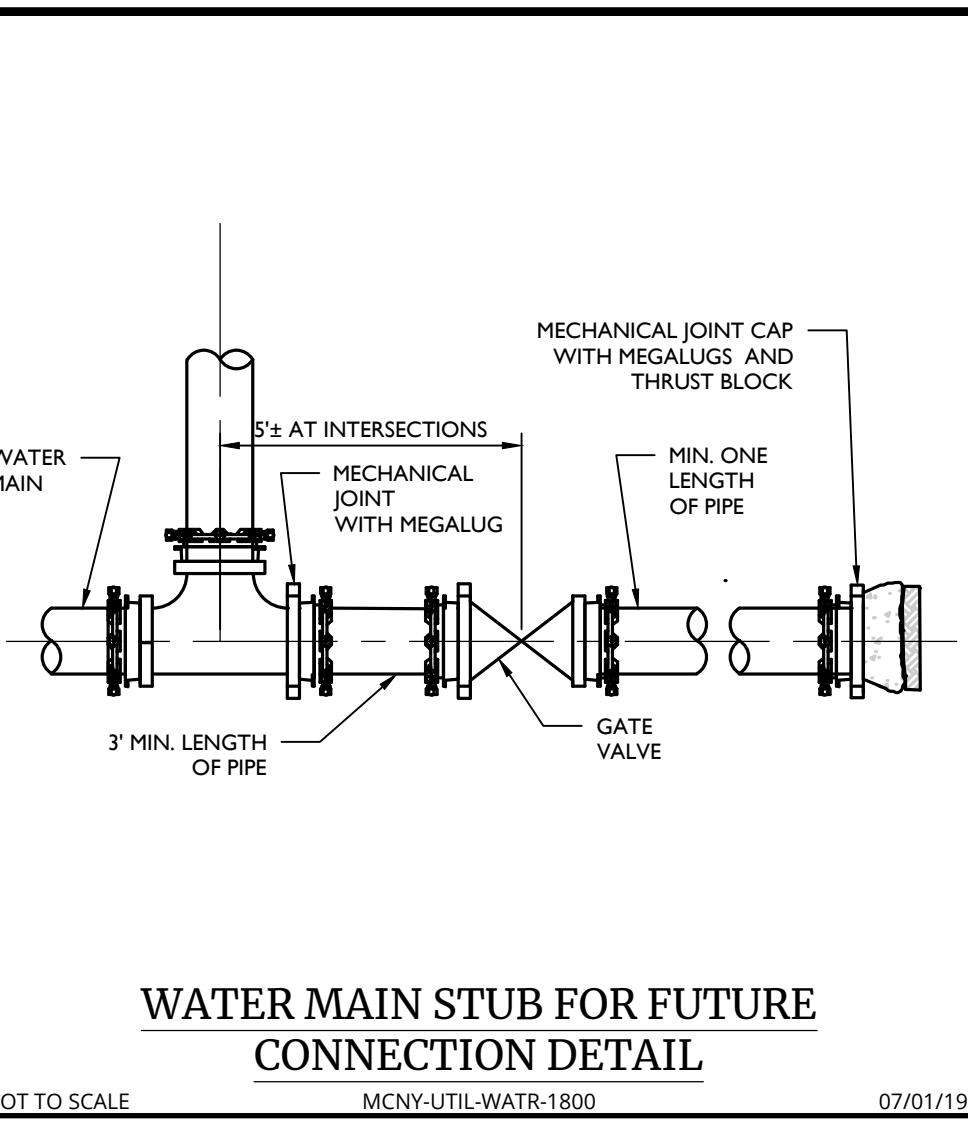
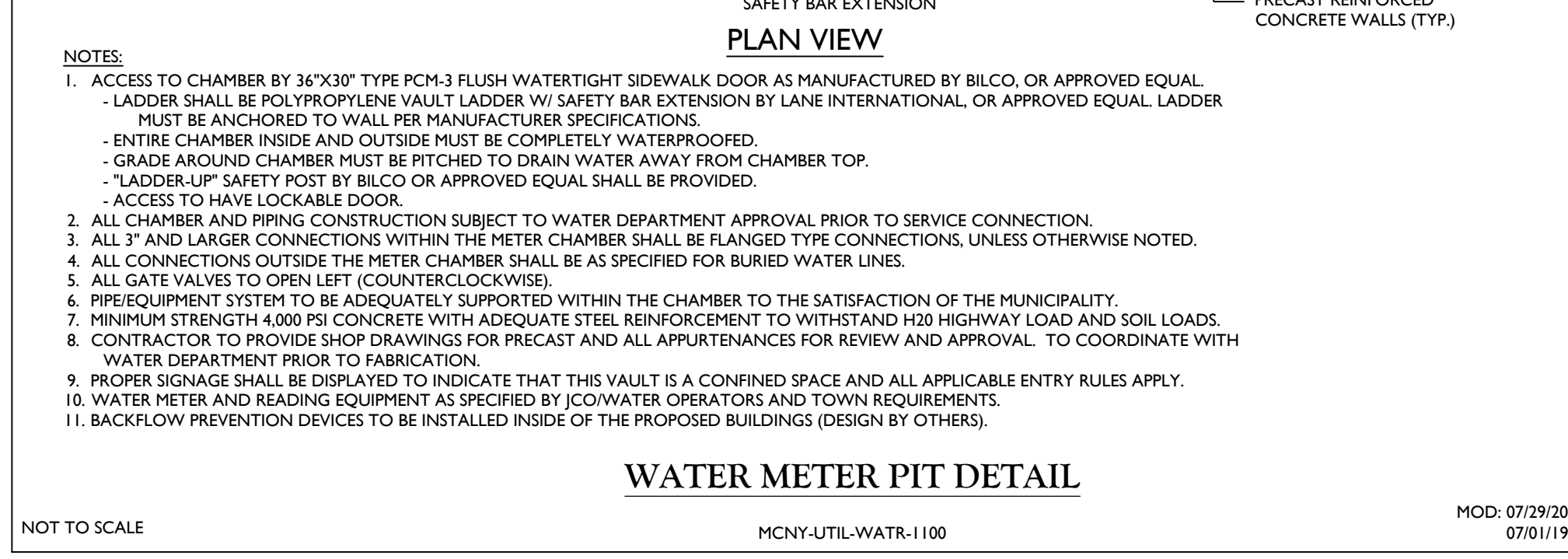
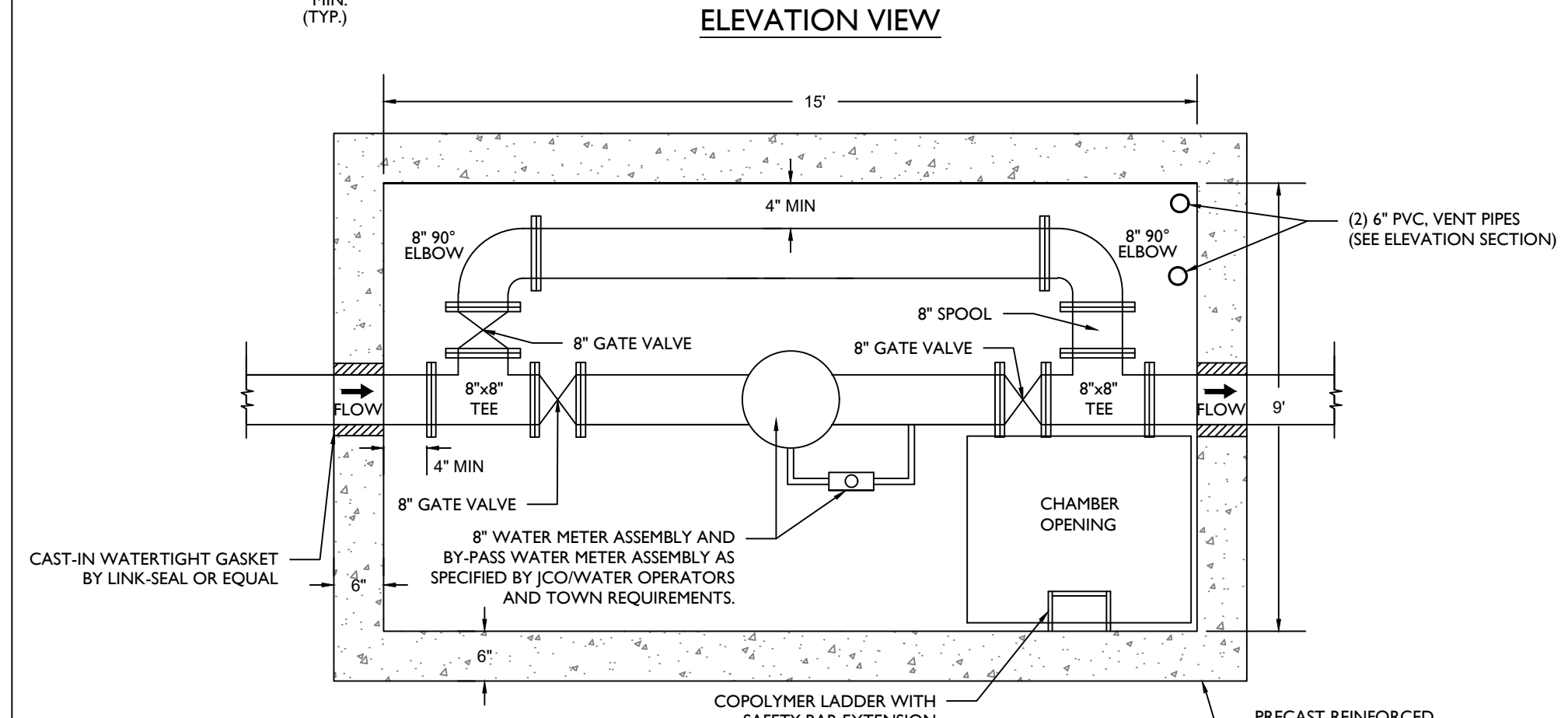
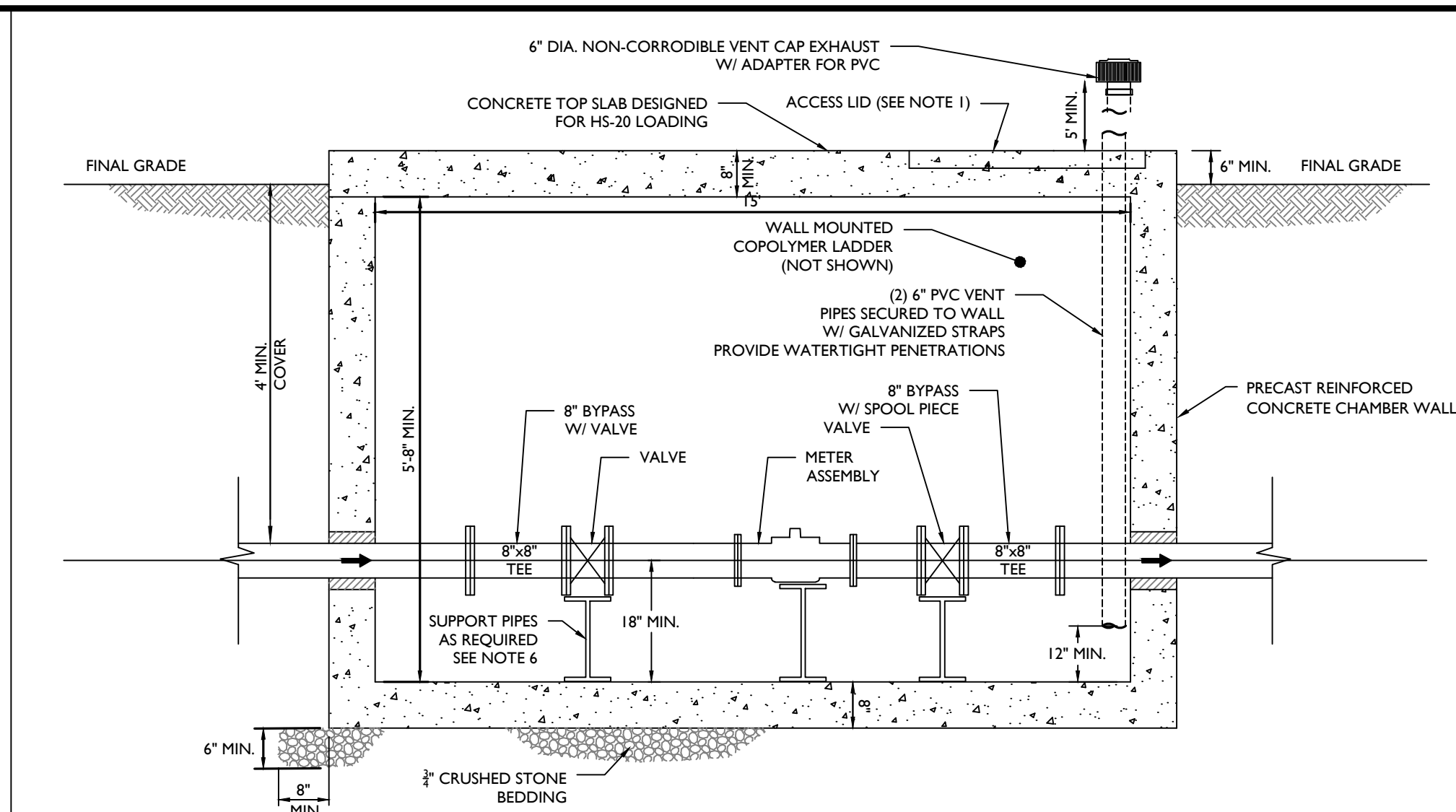
NEWBURGH
555 Hudson Valley Avenue
Suite 101
New Windsor, NY 12553
Phone: 845.564.4495
COLLIERS ENGINEERING & DESIGN, INC.
ARCHITECTURAL, LANDSCAPE ARCHITECTURE,
SURVEYING, P.C.

SCALE: AS SHOWN DATE: 04/08/2024 DRAWN BY: MAS CHECKED BY: CDR
PROJECT NUMBER: 20006912E DRAWING NAME: C-4-GHT

SHEET TITLE:
LIGHTING PLAN
WEST

SHEET NUMBER:
C-801

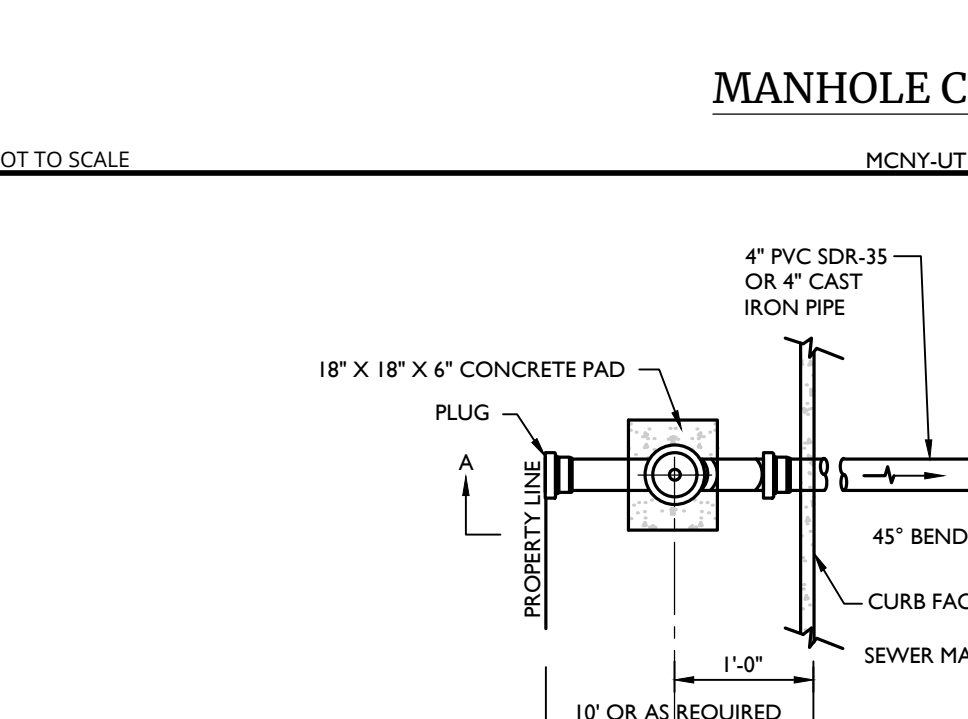
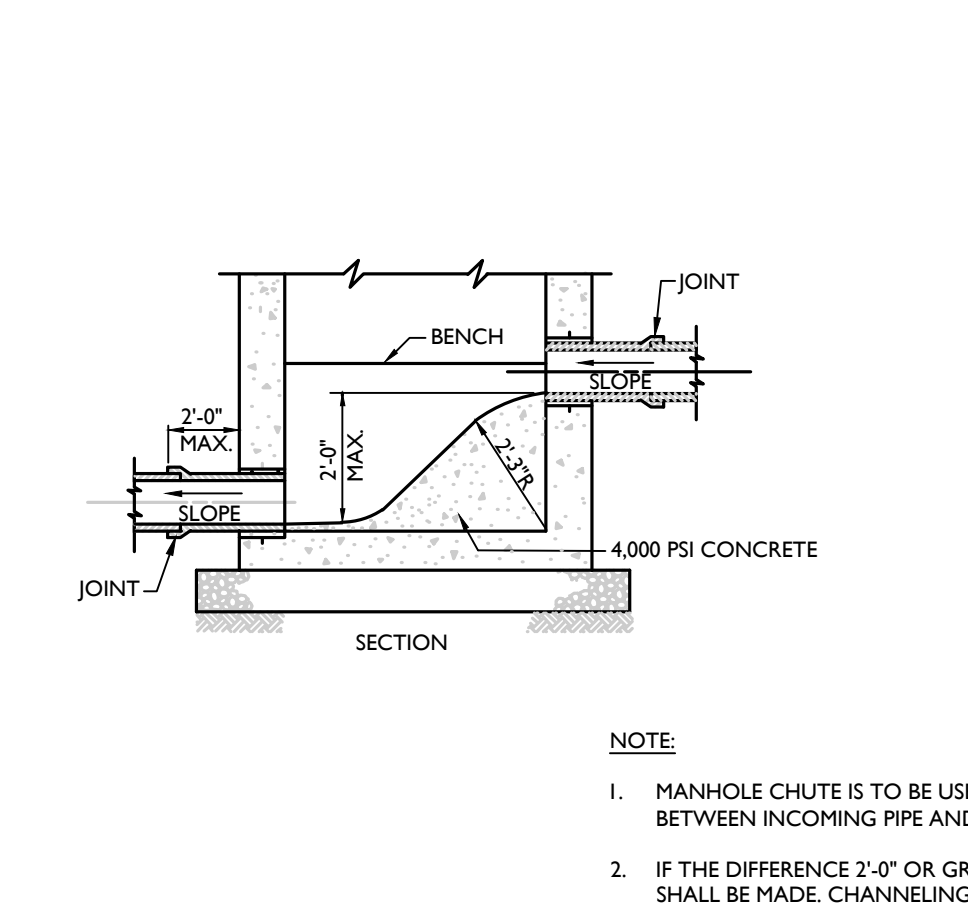
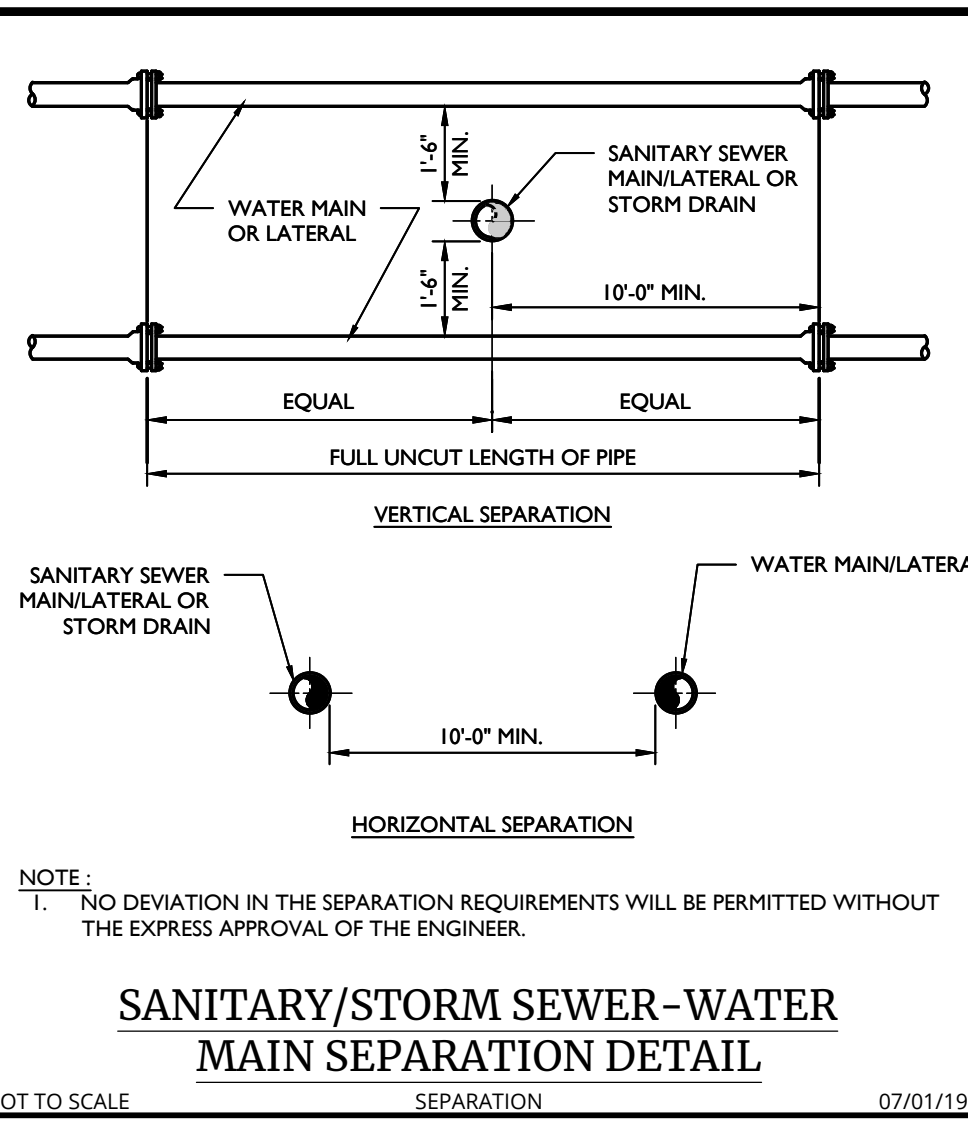
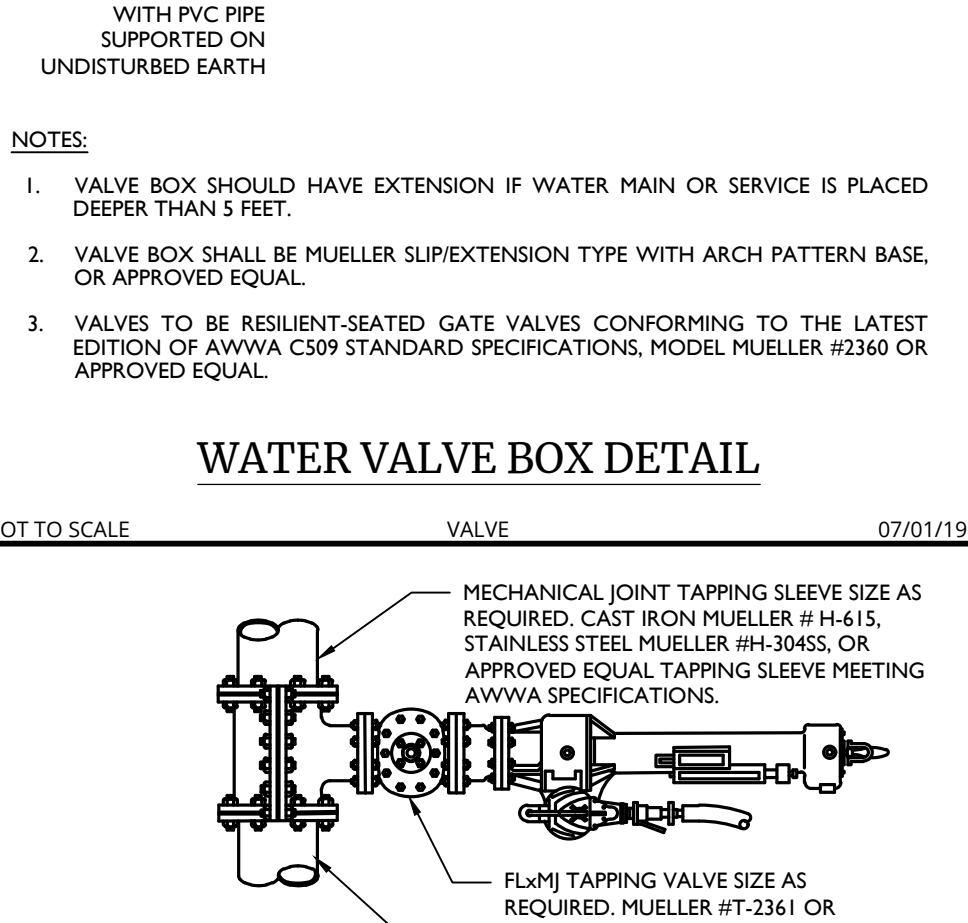
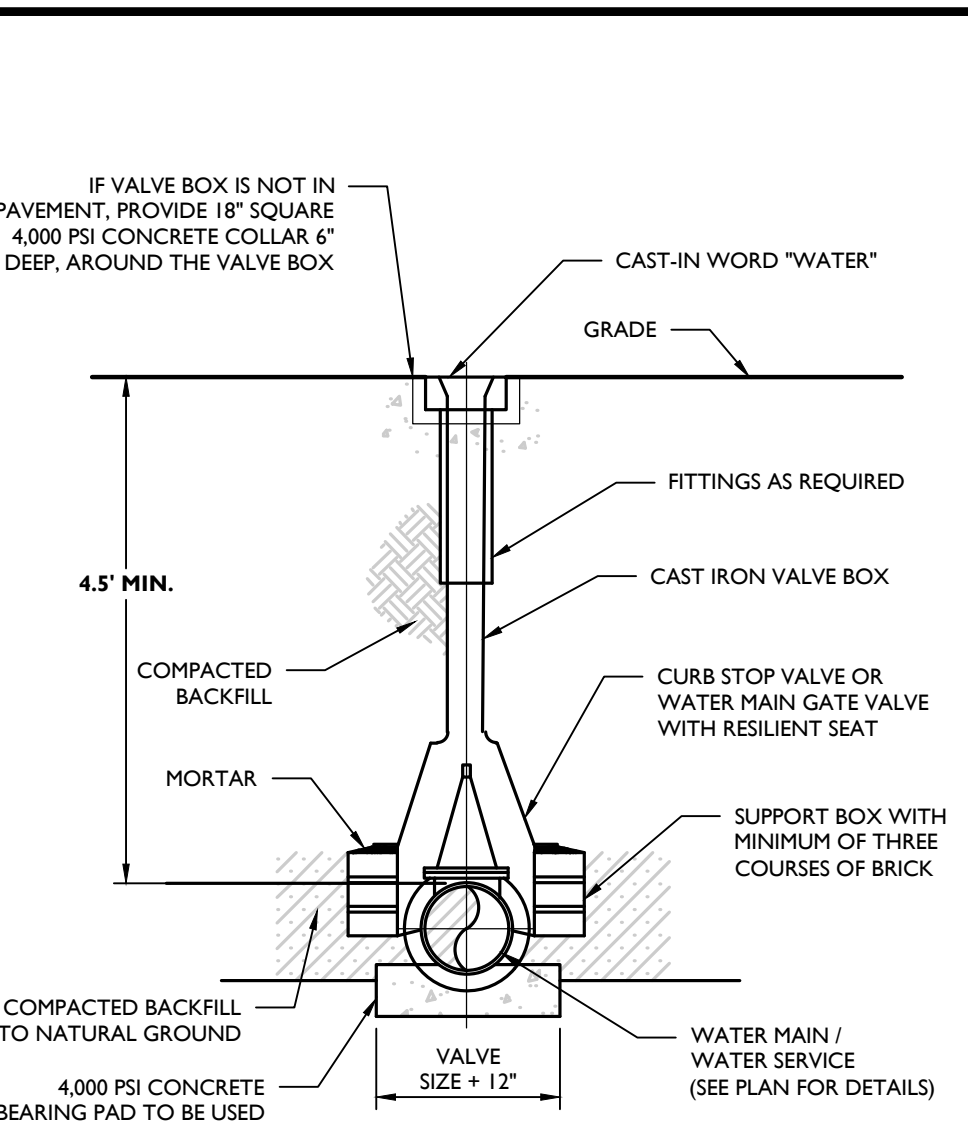
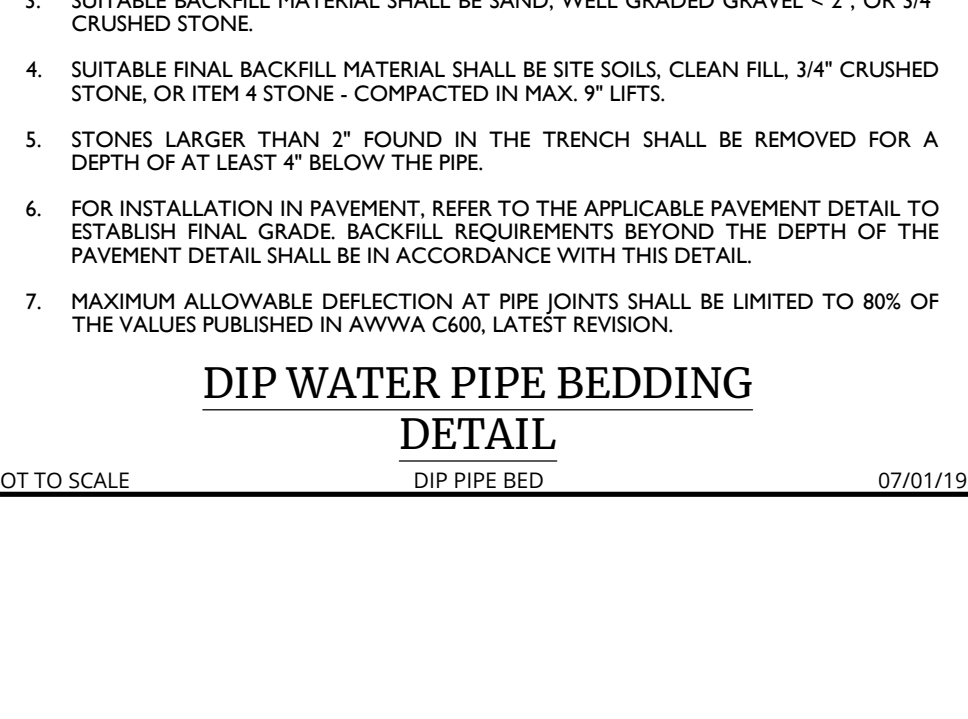
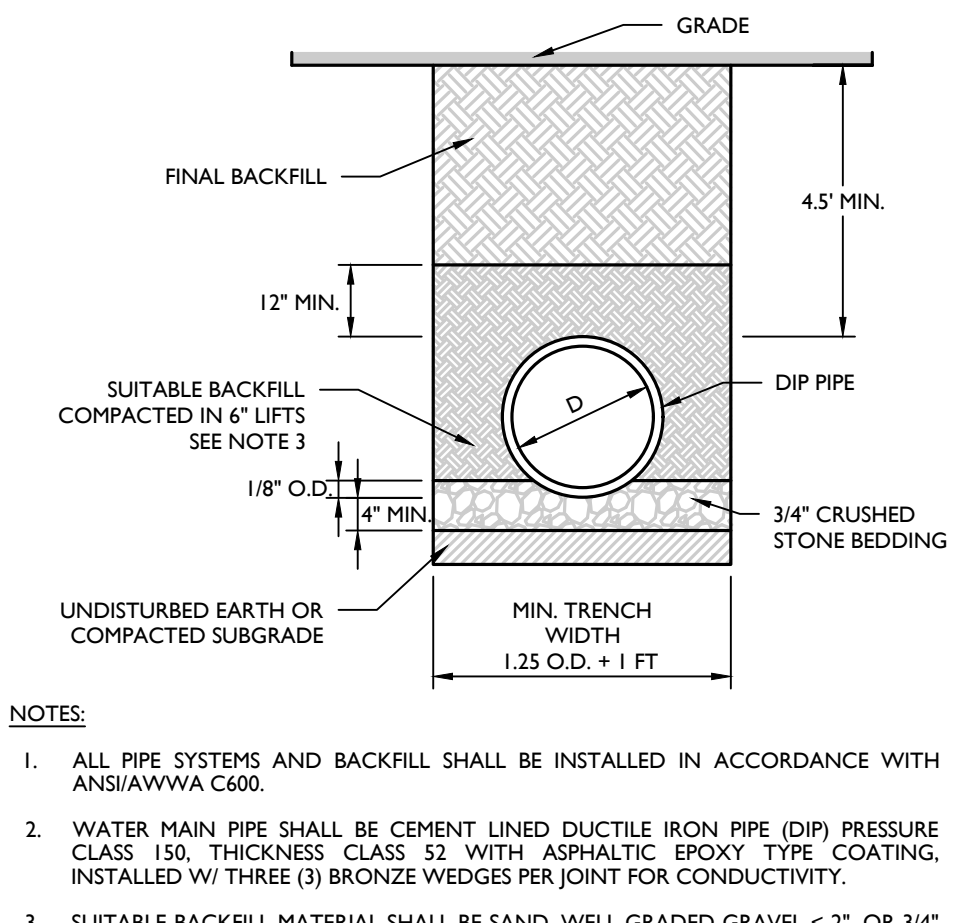
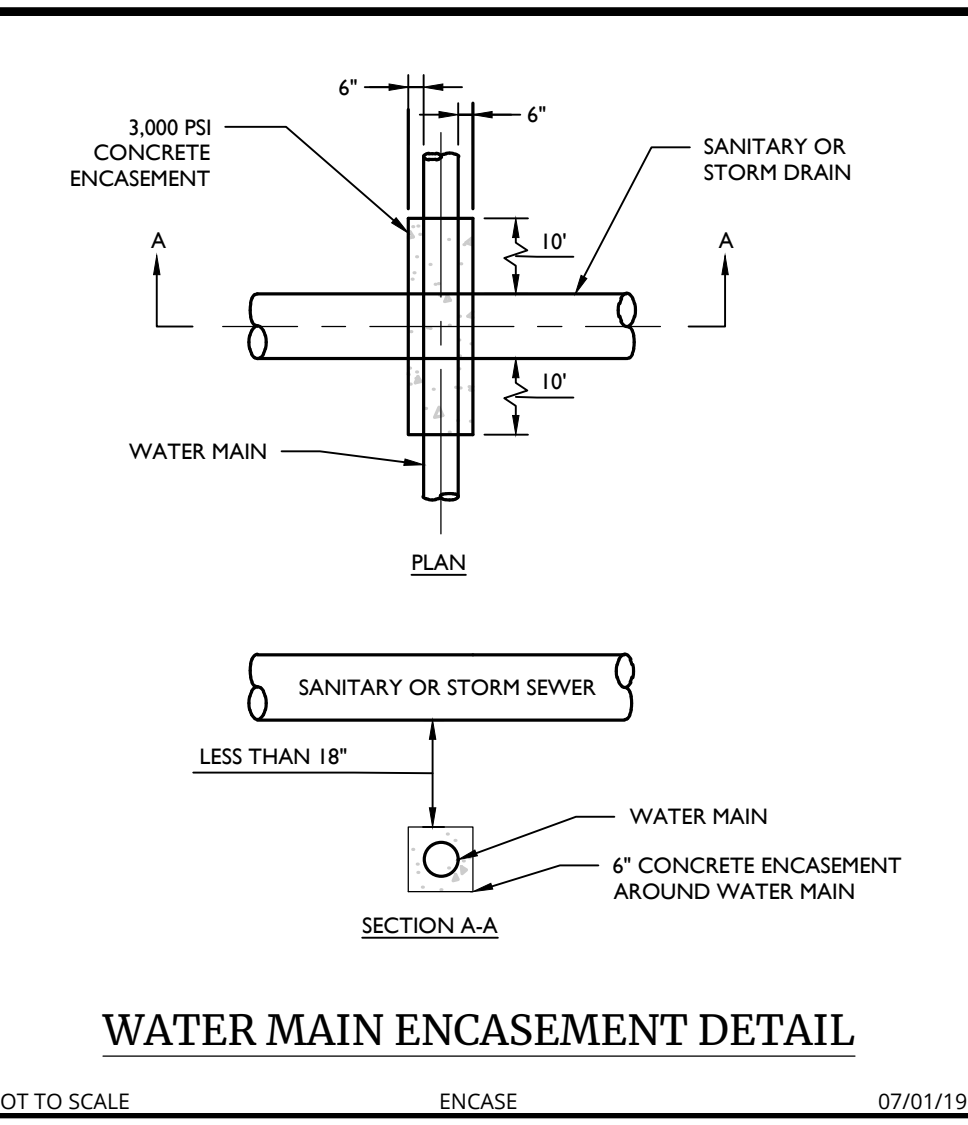
UNAUTHORIZED ALTERATION OR ADDITION TO A SURVEY OR ENGINEERING MAP BEARING A LICENSED LAND SURVEYOR OR PROFESSIONAL ENGINEER IS A VIOLATION OF SECTION 7209, SUB-DIVISION 2, OF THE NEW YORK STATE EDUCATION LAW. ONLY MAPS WITH THE LAND SURVEYOR OR PROFESSIONAL ENGINEER'S SEAL ARE GENUINE TRUE AND CORRECT COPIES OF THE LAND SURVEYOR OR PROFESSIONAL ENGINEER'S ORIGINAL WORK AND OPINION.



JOINT RESTRAINT SCHEDULE DETAIL

PIPE SIZE IN INCHES	NUMBER AND SIZE OF RODS REQUIRED AND PIPE LENGTH IN FEET TO BE RESTRAINED					
	90° TEE OR DEAD END PLUG		45° BEND		22 1/2° BEND	
No.	SIZE	No.	SIZE	No.	SIZE	L'
4	2 3/4"	30'	2 3/4"	10'	2 3/4"	5'
6	2 3/4"	40'	2 3/4"	10'	2 3/4"	5'
8	4 or 2 3/4"	50'	2 3/4"	15'	2 3/4"	5'
10	4 or 2 3/4"	60'	2 3/4"	20'	2 3/4"	5'
12	4 1/2"	70'	2 3/4"	20'	2 3/4"	5'
14	4 1/2"	80'	2 3/4"	25'	2 3/4"	5'
16	4 1/2"	80'	2 3/4"	25'	2 3/4"	5'

L' = LENGTH OF PIPE TO BE RESTRAINED IS FOR EACH SIDE OF BEND



LIST OF STANDARD WATER SUPPLY MATERIALS

MCNY-UTIL-WATR-2500
M.O.D: 04/23/21
07/01/19

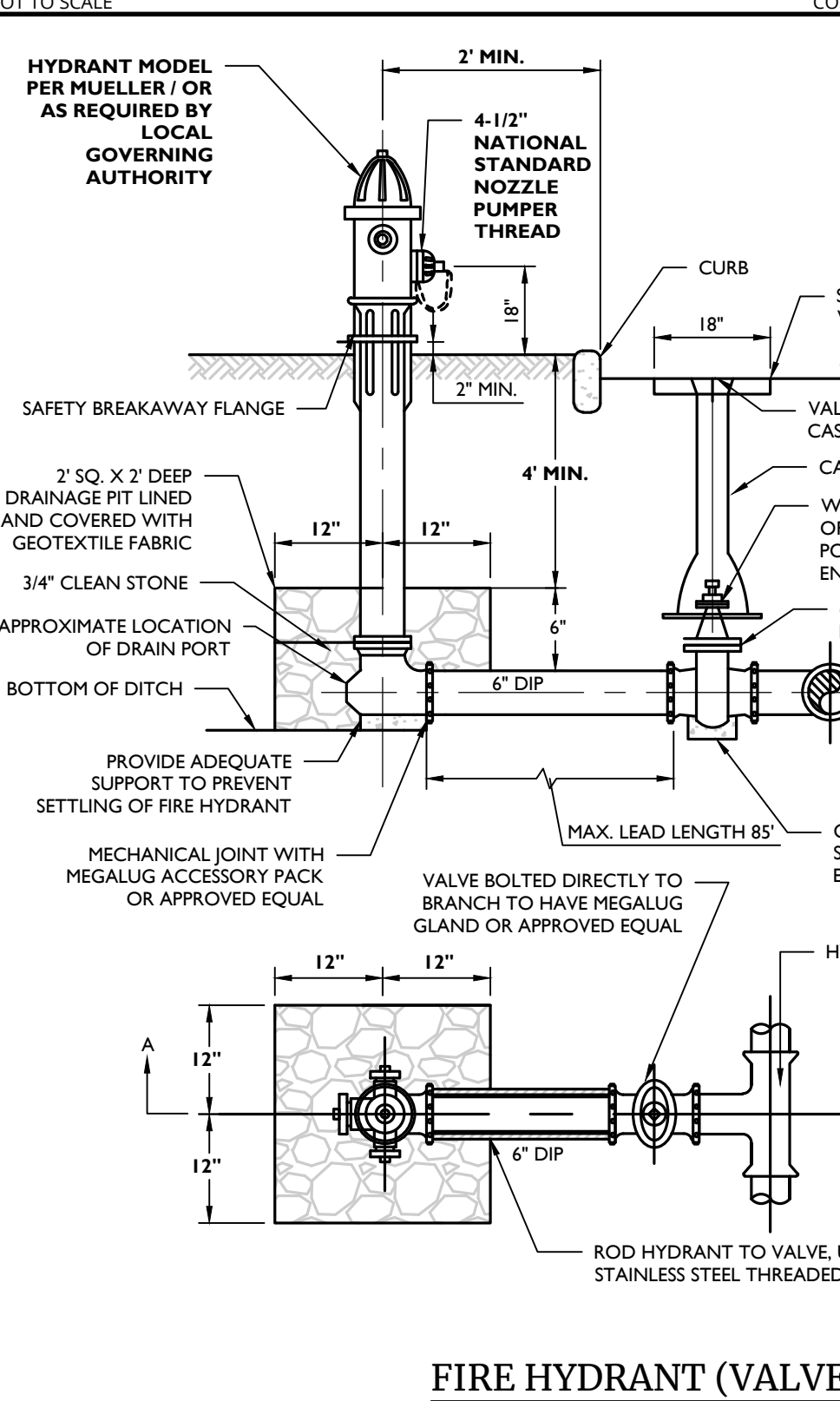
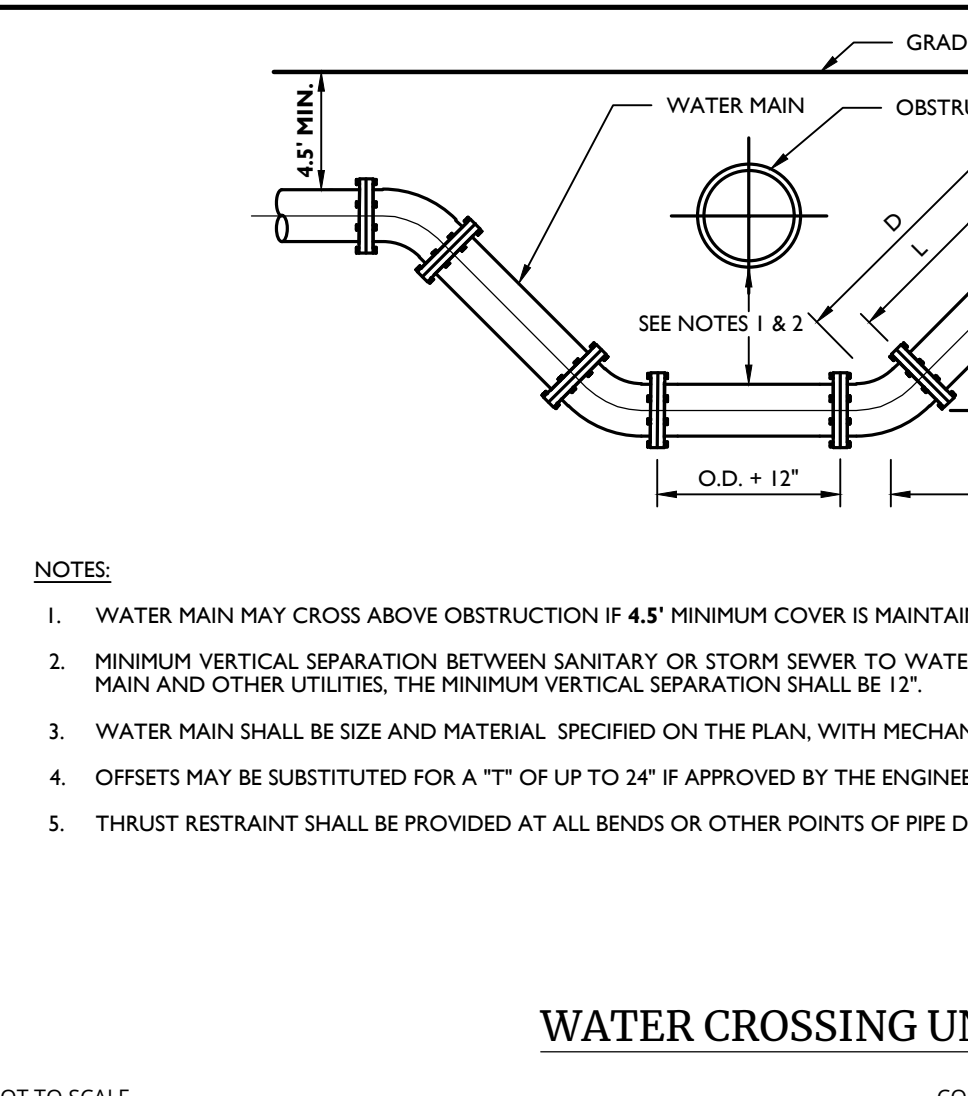
ANY EXCEPTIONS TO THE MATERIALS LISTED BELOW SHALL BE APPROVED IN WRITING BY THE ENGINEER.

HYDRANTS	MUELLER SUPER CENTURION 350 HA-421, 2 HOSE NOZZLES AND 1 PUMPER NOZZLE
VALVES	MUELLER TYPE A-260 RESILIENT WEDGE GATE VALVES, SEE AWWA C500
VALVE BOXES	CAST IRON, SUEXTENSION TYPE, ARCH PATTERN BASE, AND AT LEAST 3" IN DIAMETER
PIPE	CLASS 52 DUCTILE IRON PIPE CEMENT LINED & SEALED W/ MECHANICAL OR PUSH-ON JOINT CONNECTIONS
TAPPING SLEEVE	MUELLER #H-415, DUCTILE IRON CLASS 250 OR MUELLER #H-30455 STAINLESS STEEL
TAPPING VALVE	MUELLER #T-2361 CLASS 250
MECHANICAL JOINT RESTRAINTS	EBA'S IRON MEGALUG SERIES 1100
FITTINGS	DUCTILE IRON MECHANICAL JOINT FITTINGS

NOTE: ALL UTILITY WORK SHALL BE CONSTRUCTED IN ACCORDANCE WITH THE CURRENT STANDARDS AND DETAILS OF THE MUNICIPALITY.

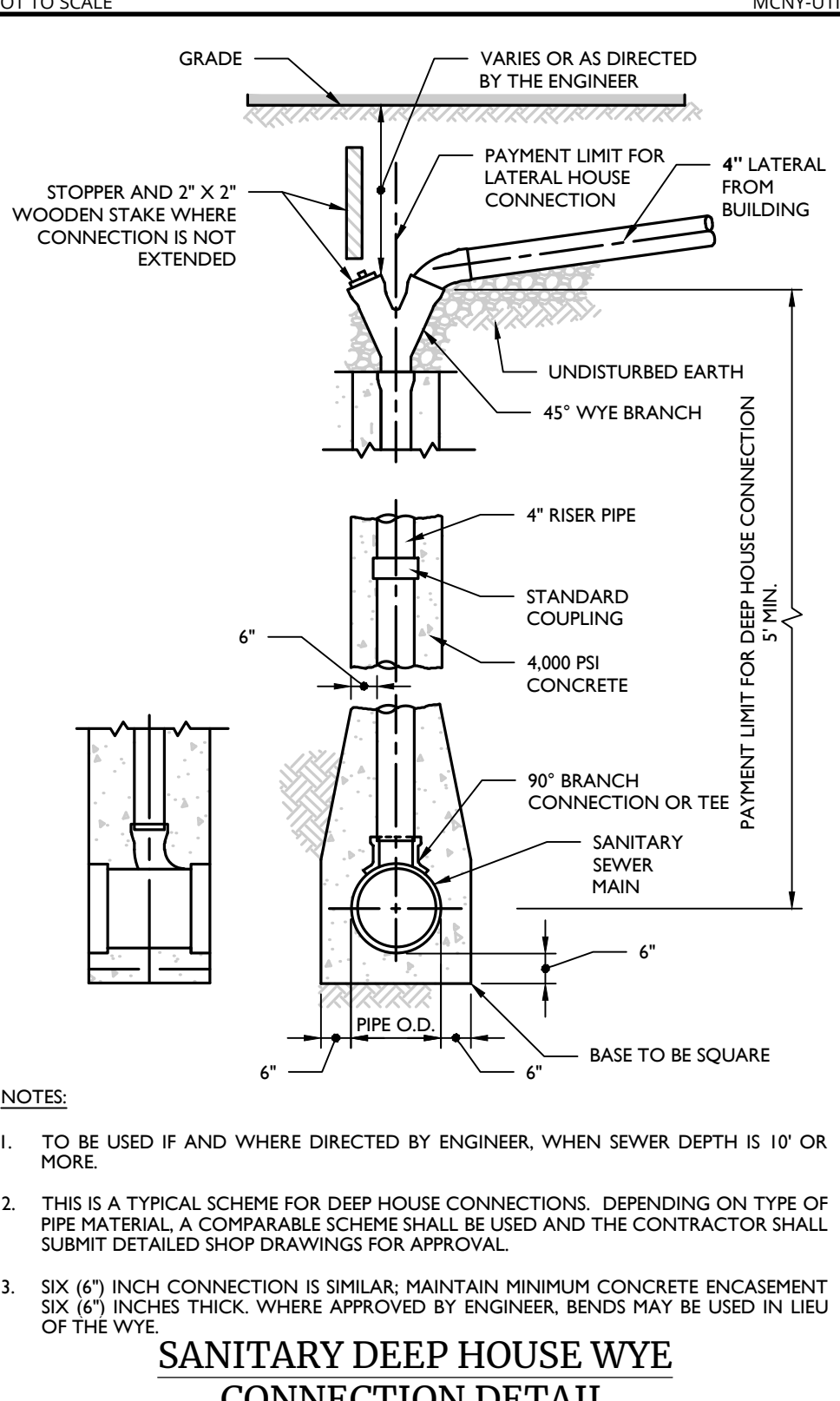
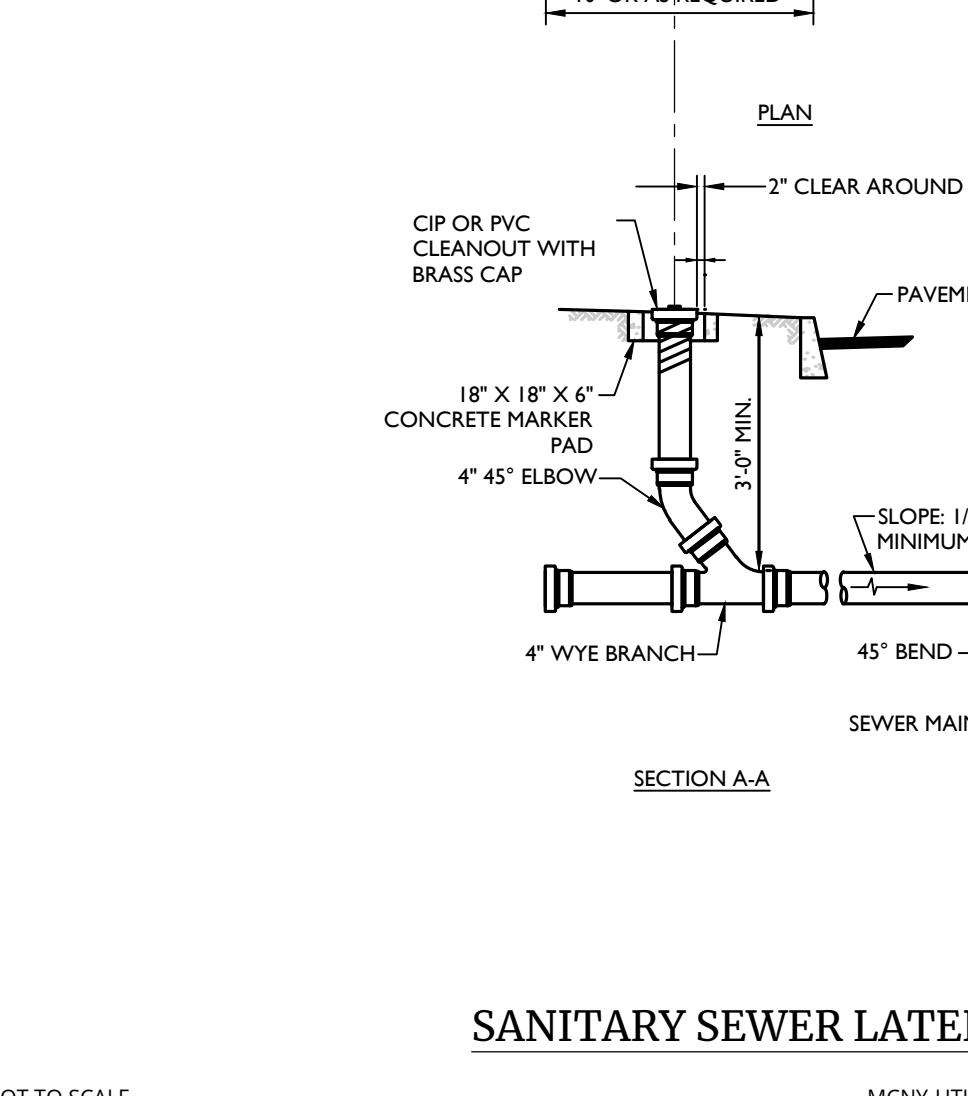
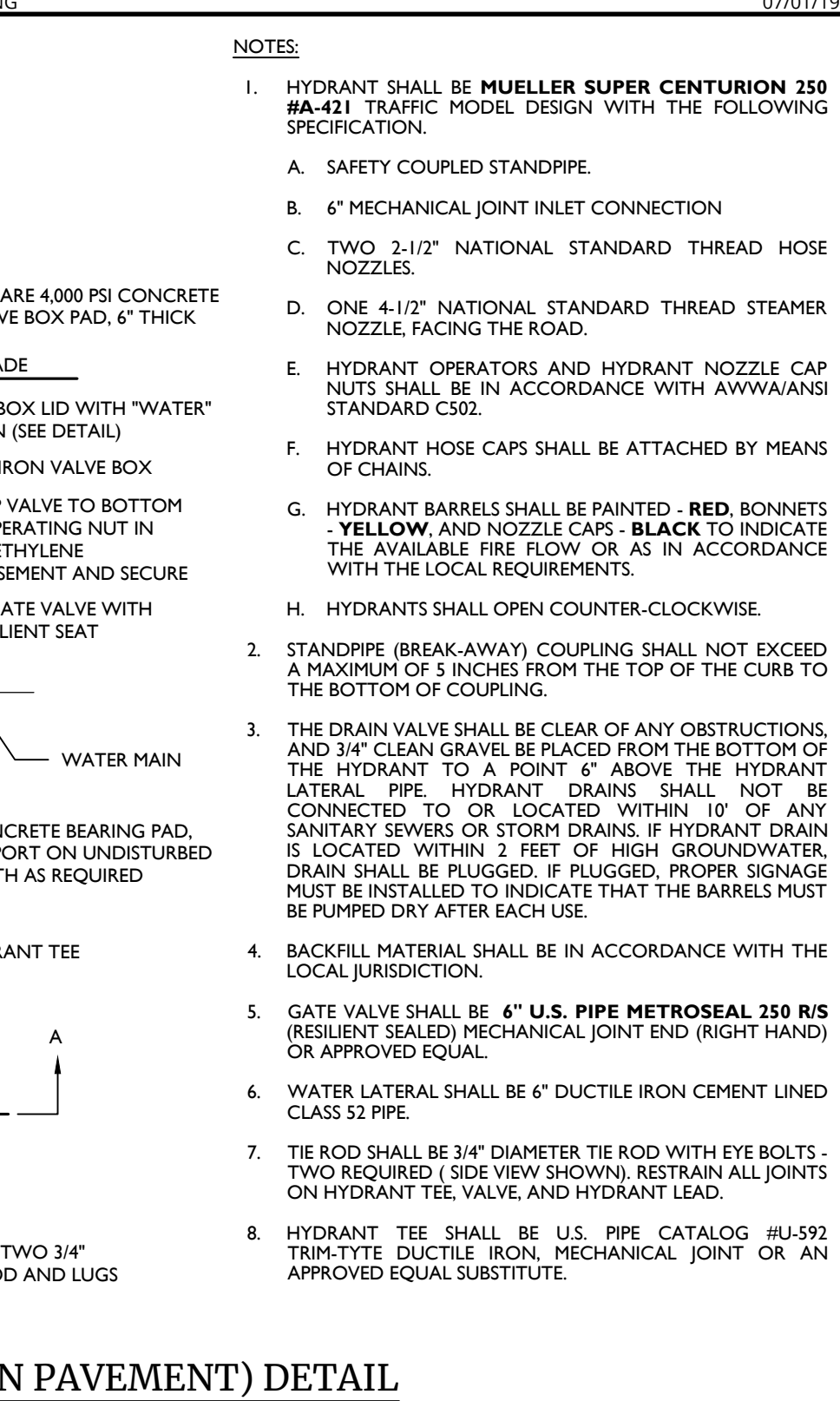
WATER NOTES:

1. ALL METHODS, MATERIALS, FITTINGS, DEVICES, DIMENSIONAL REQUIREMENTS AND PROCEDURES NECESSARY TO COMPLETE THE WORK SHOWN HEREON SHALL MEET THE APPROPRIATE CURRENT AWWA SPECIFICATIONS IN EFFECT AS WELL AS ALL REQUIREMENTS DETERMINED BY THE MUNICIPALITY OR ANY OTHER GOVERNMENTAL BODY HAVING JURISDICTION OVER SAID WORK.
2. ALL WATER MAIN PIPE SHALL BE AWWA C514 (21.50 THICKNESS CLASS FIFTY-TWO (52) CEMENT LINED DUCTILE IRON PUSH-ON (RUBBER GASKET) TYPE AND INSTALLED WITH THREE (3) BRONZE WEDGES PER JOINT. JOINT INSTALLATION SHALL BE "TYPE 2" AS PRESCRIBED IN THE LATEST REVISION OF AWWA C600. MECHANICAL JOINTS SHALL HAVE RETAINER GLANDS.
3. ALL PIPE FITTINGS SHALL BE IN ACCORDANCE WITH THE LATEST REVISION OF THE AWWA SPECIFICATION C1312A21.53-00.
4. ALL GATE VALVES SHALL BE "MUELLER" OR APPROVED EQUAL RESILIENT-SEALED GATE VALVES WITH MECHANICAL JOINT CONNECTIONS. OPENING SHALL BE LEFT (COV) AND OPERATION SHALL BE BY 2" SQUARE WRENCH NUT. MINIMUM WORKING PRESSURE SHALL BE 250 PSI. GATE VALVES ARE TO BE INSTALLED IN ACCORDANCE WITH LATEST REVISION OF AWWA SPECIFICATION C500.
5. ALL VALVE BOXES SHALL BE EXTENSION TYPE BY MUELLER SET ON BRICKS AND POSITIONED PERPENDICULAR TO THE PIPE AND ON COMPACTED BACKFILL.
6. ALL CHANGES IN PIPE LINE DIRECTION, BOTH HORIZONTAL AND VERTICAL SHALL BE TIE-RODDED AND MECHANICALLY RESTRAINED AS DIRECTED BY THE ENGINEER.
7. FLUSH OUT ALL WATER MAINS AND APPURTENANCES AS DIRECTED BY THE MUNICIPALITY UNTIL THE WATER RUNS CLEAN AND FREE OF RUST AND DIRT. PRESSURIZE ALL LINES AND APPURTENANCES FOR FORTY-EIGHT (48) HOURS, OR AS DIRECTED BY THE MUNICIPALITY, TO REVEAL ANY LEAKS OR BROKEN PIPE. THIS SHALL ALL BE DONE EITHER AS A TOTAL PROJECT OR BETWEEN VALVED SECTIONS AS DIRECTED BY THE TOWN. IF PRESSURE TESTING REVEALS ANY LEAKS OR DISRUPTIES THE CONTRACTOR SHALL PROMPTLY UNCOVER THE LEAK OR BROKEN PIPE AND IMMEDIATELY REPAIR AND RETEST SAME. THIS SHALL BE REPEATED AS MANY TIMES AS MAY BE REQUIRED TO DEMONSTRATE A TIGHT LINE TO THE SATISFACTION OF THE TOWN & PROJECT ENGINEER. THE NEW WATER MAIN AND APPURTENANCES SHALL BE PRESSURE TESTED IN ACCORDANCE WITH THE LATEST REVISION OF AWWA C-600. RESULTS OF TESTS ARE TO BE SUBMITTED AND ACCEPTED BY THE MUNICIPALITY & PROJECT ENGINEER.
8. THE MUNICIPAL ENGINEER MUST BE NOTIFIED FORTY-EIGHT (48) HOURS PRIOR TO PRESSURE TESTING.
9. ALL WATER LINES AND APPURTENANCES SHALL BE DISINFECTED TO THE SATISFACTION OF THE MUNICIPALITY, PROJECT ENGINEER, AND IN ACCORDANCE WITH THE STANDARDS OF THE DEPT. OF HEALTH. THIS SHALL ALSO BE DONE IN ACCORDANCE WITH THE LATEST REVISION OF AWWA C651. A MINIMUM OF TWO (2) BACTERIAL TESTS TAKEN TWENTY-FOUR (24) HOURS APART ARE REQUIRED. RESULTS OF TESTS ARE TO BE SUBMITTED AND ACCEPTED BY THE MUNICIPALITY & PROJECT ENGINEER. DISINFECTION PROCEDURE, FEED LOCATIONS, AND SAMPLE LOCATIONS MUST BE REVIEWED AND APPROVED BY THE MUNICIPALITY & PROJECT ENGINEER PRIOR TO TESTING. AS PER AWWA C651, LATEST REVISION, WATER MAIN DISINFECTION PROCEDURE SHALL GENERALLY BE AS FOLLOWS:
 - A. DISINFECTING MATERIALS TO BE USED TO ENSURE THEIR INTEGRITY.
 - B. PREVENTING CONTAMINATING MATERIALS FROM ENTERING THE WATER MAIN DURING STORAGE, CONSTRUCTION, OR REPAIR AND NOTING POTENTIAL CONTAMINATION AT THE CONSTRUCTION SITE.
 - C. REMOVED BY FLUSHING OR OTHER MEANS, THOSE MATERIALS THAT MAY HAVE ENTERED THE WATER MAIN.
 - D. CHLORINATING ANY RESIDUAL CONTAMINATION THAT MAY REMAIN, AND FLUSHING THE CHLORINATED WATER FROM THE MAIN.
 - E. PROTECTING THE EXISTING DISTRIBUTION SYSTEM FROM BACKFLOW CAUSED BY HYDROSTATIC PRESSURE TEST AND DISINFECTION PROCEDURES.
 - F. DOCUMENTING THAT AN ADEQUATE LEVEL OF CHLORINE CONTACT EACH PIPE TO PROVIDE DISINFECTION.
 - G. DETERMINING THE BACTERIOLOGICAL QUALITY BY LABORATORY TEST AFTER DISINFECTION.
 - H. FINAL CONNECTION OF THE APPROVED NEW WATER SERVICE TO THE ACTIVE DISTRIBUTION SYSTEM.
10. THE CONTINUOUS FEED METHOD SHALL BE EMPLOYED FOR CHLORINATION, AS DESCRIBED IN AWWA C651, LATEST REVISION. AFTER CHLORINATION, THE CONTRACTOR SHALL FLUSH THE MAINS AS PER FINAL FLUSHING REQUIREMENTS OF AWWA C651, LATEST REVISION. WHEN CUTTING INTO OR REPAIRING AN EXISTING MAIN, DISINFECTION PROCEDURES SHALL BE OBSERVED AS DETAILED IN DISINFECTION PROCEDURES WHEN CUTTING INTO OR REPAIRING EXISTING MAINS OF AWWA C651, LATEST REVISION. THE TABLE METHOD FOR INTRODUCING CHLORINE TO THE SYSTEM SHALL NOT BE PERMITTED.
11. VERIFICATION SHALL BE ACCOMPLISHED VIA BACTERIOLOGICAL TESTS. AFTER FINAL FLUSHING AND BEFORE THE NEW WATER MAIN IS CONNECTED TO THE DISTRIBUTION SYSTEM, TWO CONSECUTIVE SETS OF ACCEPTABLE SAMPLES, TAKEN AT LEAST 24 HR APART, SHALL BE COLLECTED FROM THE NEW MAIN. AT LEAST ONE SET OF SAMPLES SHALL BE COLLECTED FROM EVERY 1200 FT OF THE NEW WATER MAIN, PLUS ONE SET FROM THE END OF THE LINE AND AT LEAST ONE SET FROM EACH BRANCH. SAMPLES SHALL BE TESTED FOR BACTERIOLOGICAL, CHEMICAL AND PHYSICAL QUALITY IN ACCORDANCE WITH STANDARD METHODS FOR THE EXAMINATION OF WATER AND WASTEWATER, AND SHALL SHOW THE ABSENCE OF COLIFORM ORGANISMS AND THE PRESENCE OF A CHLORINE RESIDUAL. SAMPLES FOR BACTERIOLOGICAL ANALYSIS SHALL BE COLLECTED IN STERILE BOTTLES TREATED WITH SODIUM THIOSULFATE, AS REQUIRED BY STANDARD METHODS FOR THE EXAMINATION OF WATER AND WASTEWATER. NO HOSE OR FIRE HYDRANT SHALL BE USED IN THE COLLECTION OF SAMPLES. THERE SHOULD BE NO WATER IN THE TRENCH UP TO THE CONNECTION FOR SAMPLING. THE SAMPLING PIPE MUST BE DEGASED AND CLEAN AND DISINFECTED AND FLUSHED PRIOR TO SAMPLING. A CONNECTION COCK MAY BE INSTALLED IN THE MAIN WITH A COPPER-TUBE GODSENECK ASSEMBLY. AFTER SAMPLES HAVE BEEN COLLECTED, THE GODSENECK ASSEMBLY MAY BE REMOVED AND RETAINED FOR FUTURE USE. IF SAMPLE RESULTS FROM THE LAB INDICATE A MEASURED HPC GREATER THAN 500 COLONY-FORMING UNITS (CFU) PER ML, FLUSHING SHOULD BE RESUMED AND COCKS SET TO CLOSED POSITION AND THE HPC IS LESS THAN 500 CFU/ML, THE RECORD OF COMPLIANCE SHALL BE THE BACTERIOLOGICAL TEST RESULTS CERTIFYING THAT THE WATER SAMPLED FROM THE NEW WATER MAIN IS FREE OF COLIFORM BACTERIA CONTAMINATION AND IS EQUAL TO OR BETTER THAN THE BACTERIOLOGICAL WATER QUALITY IN THE DISTRIBUTION SYSTEM.
12. ALL OTHER REQUIREMENTS OF AWWA C651, LATEST REVISION, SHALL BE OBSERVED.
13. WATER SERVICE CROSSING SEWER OR STORM SHALL BE LAID TO PROVIDE A MINIMUM VERTICAL DISTANCE OF 18" BETWEEN THE OUTSIDE OF THE WATER MAIN AND THE OUTSIDE OF THE SEWER OR STORM. THIS SHALL BE THE CASE WHERE THE WATER MAIN IS EITHER ABOVE OR BELOW THE SEWER. AT CROSSINGS, ONE FULL LENGTH OF WATER PIPE SHALL BE LOCATED SO BOTH JOINTS WILL BE AS FAR FROM THE SEWER OR STORM AS POSSIBLE. SPECIAL STRUCTURAL SUPPORT FOR THE WATER AND SEWER MAY BE REQUIRED.
14. WATER SERVICE SHALL BE LAID AT LEAST 10 FEET HORIZONTALLY FROM ANY EXISTING OR PROPOSED SEWER MAIN OR SERVICE.
15. WATER TIGHT PLUGS ARE TO BE INSTALLED IN THE ENDS OF PIPES WHEN WORK IS NOT IN PROGRESS.
16. LEAKAGE AND HYDROSTATIC PRESSURE TESTING SHALL BE PERFORMED AT 1.5 TIMES THE WORKING PRESSURE OR 150 PSI WHICHEVER IS GREATER.
17. THE MAXIMUM DEFLECTION ALLOWED ALLOWED AT PIPE JOINTS SHALL BE LIMITED TO 80% OF THAT ALLOWED BY AWWA OR IN ACCORDANCE WITH THE MUNICIPALITY. FOR AWWA ALLOWABLE JOINT DEFLECTIONS SEE LATEST REVISION OF AWWA SPECIFICATION C600.
18. CONSTRUCTION MUST CONFORM TO ALL ORDINANCES.
19. CONTRACTOR SHALL VERIFY THE LOCATION AND ELEVATION OF EXISTING WATER AND OTHER UTILITIES PRIOR TO THE COMMENCEMENT OF CONSTRUCTION.
20. CONTRACTOR TO CALL UNDERGROUND MARK-OUT PRIOR TO COMMENCEMENT OF CONSTRUCTION AT 1-800-962-7962 FOR COMPLETE UTILITIES MARK-OUT.
21. CONTRACTOR TO CONTACT WATER DEPARTMENT AT LEAST 2 DAYS PRIOR TO CONSTRUCTION.
22. ALL IMPROVEMENTS SHALL BE INSPECTED BY A PROFESSIONAL ENGINEER LICENSED IN THE STATE OF NEW YORK AND CERTIFICATION SHALL BE PROVIDED TO THE MUNICIPALITY THAT THE SUBJECT IMPROVEMENTS HAVE BEEN CONSTRUCTED IN ACCORDANCE WITH THE APPROVED PLANS.
23. CONTRACTOR TO NOTIFY ENGINEER OF ANY DEVIATION FROM THE HORIZONTAL OR VERTICAL ALIGNMENTS WITH REGARDS TO EXISTING UTILITIES.
24. A CERTIFIED AS BUILT MAP OF THE WATER SYSTEM IMPROVEMENTS SHALL BE PROVIDED TO THE MUNICIPALITY WATER DEPARTMENT BY A LICENSED DESIGN PROFESSIONAL.



MECHANICAL JOINTS

ANGLE	D =	R =	L =
45°	T x 1.414	T x 1.000	D-2A
22.5°	T x 2.613	T x 2.414	D-2A
11.25°	T x 5.128	T x 5.027	D-2A



TOWN OF WAWAYANDA PLANNING BOARD

PRELIMINARY SITE PLAN FOR DEWPOINT SOUTH

SBL: 4-1-50.32, 6-1-90.22, 90.24 & 107

TOWN OF WAWAYANDA ORANGE COUNTY NEW YORK STATE

Robinson Cory Daniel
NEW YORK LICENSED PROFESSIONAL ENGINEER
LICENSE NUMBER: 103788-01
COLLIERS ENGINEERING & DESIGN CT, P.C.
N.Y. C.O.A.# 09170769

Colliers Engineering & Design
555 Hudson Valley Avenue Suite 101
New Windsor, NY 12553
Phone: 945.564.4495
COLLIERS ENGINEERING & DESIGN ARCHITECTURAL, INTERIOR DESIGN & SURVEYING CT, P.C.

DATE: 04/08/2024
DRAWN BY: MAM
CHECKED BY: CDR
PROJECT NUMBER: 20060912E
DRAWING NAME: C-0115

SHEET TITLE: WATER DETAILS
SHEET NUMBER: C-902

NOTE: DO NOT SCALE DRAWINGS FOR CONSTRUCTION.

